

Like

Tweet 0

Share

[Click to view this email in a browser](#)

an international association of artists

january 2012

# The Boston Printmakers *e-newsletter*

## In This Issue

- \*Letter from the President
- \*Member Spotlight: Debra Olin
- \*How to Pay Dues
- \*Anderson Ranch
- \*Member News
- \*Exhibition Opportunities
- \*Volunteer Opportunities
- \*In Memoriam



Image above : Sylvia Walters, Oakland, CA *Untitled (Woodpeckers)*, Woodcut, 12" x 20"  
From think show

## Letter from the President

Dear Members,

Welcome to our *new* newsletter! We are very excited about this new email format, which will enable us to get news to you not only more quickly and more economically, but also with more space for a greater variety of articles. This newsletter will be sent more frequently—every other month—to our members and will be printable, just in case you would rather read your newsletter on paper.

We invite you to submit articles that you think other members would find interesting. Have you seen a show that will be “up” for a while? Would you like to tell us about a residency or show opportunity? Do you have a print technique that you could document with text and photos or video? If so, contact board member, [Nancy Diessner](mailto:nwdiessner@gmail.com) [nwdiessner@gmail.com](mailto:nwdiessner@gmail.com) with your ideas.



**Please note: January is the time to renew your dues.** It is now easy [to pay online using Pay Pal](#) (see instructions on how to do this below). We are hard at work organizing a members' show, *Palate to Plate*, which will have a companion hardcover catalogue / cookbook. We are excited about this opportunity but *to participate you must be caught up on your dues!*

## Local Artist Explores Pregnancy and Childbirth in the Jewish Pale of Settlement

By Jamie Farrell

Right, "The Importance of Language," 2010. 28.5 x 81 x 2 monoprint collage, wax, raffia, string, thread.

Somerville printmaker [Debra Olin](#) has long had a deep interest in Jewish women's folk traditions. Her art includes lush textures layered with drawn images and Yiddish text. Olin's work is striking for its large size and complex imagery, and often uses language, literature and folklore as a springboard for exploring how seemingly disparate cultures arrived at similar approaches to life's daily challenges, including ideas about death and higher powers, healing the body, and games and rituals.

In 2004, Olin was awarded the [Rappaport Prize](#), the largest public annual award to an individual artist in New England, in recognition of her work.

Olin's latest project was inspired by the work of ethnographer [S. Ansky](#), a pioneer in the collection of Jewish folk traditions. From 1791 until 1917, the Russian Empire required that most Jews live in a region called the Pale of Settlement. In 1914, An-sky created a questionnaire called The Jewish Ethnographic Program to gather information on the lives of the Jews living there. Olin first learned of the questionnaire through an article by University of California Santa Cruz [Professor Nathaniel Deutsch](#), whose English translation of the Yiddish questionnaire appears in "The Jewish Dark Continent: Life and Death in the Russian Pale of Settlement" (Harvard University Press, 2011).

The questions that most intrigued Olin were the 283 concerning pregnancy and childbirth, and the superstitions and precautions taken to protect pregnant women and newborns.

"Ansky's questionnaire reveals a familiarity and breadth of knowledge which charged my imagination and inspired me to create this body of work," Olin said. "I was immediately captivated by the project and



contacted Deutsch in search of more of these questions, which covered every aspect of life from birth to death and beyond.” To Olin’s surprise, Deutsch proposed a collaboration based on an exploration of Ansky’s work. Through Deutsch, Olin was not only able to gain a deeper understanding of Ansky’s questionnaire, but also learned of Ansky’s work collecting thousands of artifacts during his Jewish Ethnographic Expedition, which took place between 1912 and 1914.

According to Deutsch, Ansky hoped that the collected artifacts, which included a variety of amulets and traditional paper-cuts, along with recorded songs, tales and jokes, “would become the raw material and inspiration for a vibrant modern Jewish culture that would integrate and transform — rather than denigrate or reject — the traditional Jewish culture of the past.”

In the resulting series of prints, titled “Every Protection,” Olin explores the questions and findings from Ansky’s work through a rich set of images that reference protective amulets used to ward off the Evil Eye and fool the Angel of Death. Using materials that include paper, ribbon, string, wax and grommets, Olin’s new series is at once beautiful, arcane and carnal. In an essay to accompany the series, Deutsch wrote: “Debra Olin has created magical works of art that are at once luminous and adumbral; in the tradition of the practical Kabbalah to which they may belong in some significant fashion, they illuminate and obscure, reveal and conceal, the experiences of pregnancy and childbirth in the Pale.”

“Every Protection” made its debut in September at the [Eloise Pickard Smith Gallery](#), Cowell College, UC Santa Cruz. Images from the exhibit and the accompanying essay by Deutsch can be found [online](#).

*Jamie Farrell is a member of the Jewish Journal Board of Overseers. This article originally appeared in the [Jewish Journal](#), and is reprinted with permission.*

## How to Pay Your Dues Online

1. Go to the [Boston Printmakers' website](#).
2. Click on [Membership](#) on the left.
3. Scroll down to **Membership Dues** and you'll see the **Pay Now** button. Click and you'll be guided through the payment process through PayPal. It's that simple.

## Boston Printmakers' Next Member Show

Theme of the 2012 Members' Exhibition:

*Palate to Plate*

*Any member who wants to be in the show **must have his or her dues paid through 2012.***

*If you have questions about your membership status, please contact Board Member [Ky Ober](#).*

## Anderson Ranch Print Scholarship offered

Boston Printmakers will again partner with [Anderson Ranch](#) in Snowmass Village, Colorado, to offer a scholarship to attend a week-long workshop in printmaking this summer. This is a benefit of membership available to any current member. The application will be available in early February. Watch your Boston Printmakers email for application details.

## Member NEWS

Send your member news for the upcoming March/April newsletter to Jennifer Caine [jenniferleighcaine@gmail.com](mailto:jenniferleighcaine@gmail.com)

*\*\*Please note that only members' news that falls within the time period of the newsletter will be included. For example, since this newsletter is being sent out at the end of*



An integral part of most Boston Printmakers' board meetings is a potluck dinner. Now we will share this experience with the public through a members' exhibition. *Palate to Plate* is an exhibition pairing the passions and joys of cooking and printmaking, connoisseurship we recognize as pervasive among our membership. In keeping with the recipe theme from the last members' exhibition *thINK*, this time we ask all of our members from the United States, Canada and Mexico to submit a print inspired from your favorite food and accompanied with the actual recipe. We are planning a fully illustrated cookbook catalogue to accompany the exhibition and we expect the result will be a feast for the eyes!

**Deadline for submission of artwork, CD, recipe, entry form and mailing fee is  
APRIL 1, 2012.**

Questions can be directed to David Thomas at [cdtartist@yahoo.com](mailto:cdtartist@yahoo.com)

## In Memoriam



### **Carolyn Autry** 1940-2011

A member of the Boston Printmakers for many years, Carolyn Autry was born in Dubuque, Iowa, and graduated from the University of Iowa, Iowa City (BA, 1963; MFA, 1965). She was a recipient of a Ford Foundation Grant (1961-64), a Yale-Norfolk Fellowship (1962), and an Ohio Arts Council grant to individual artists (1979 and 1989). In 1984 and 1987 she was Artist-in-Residence, School of the Arts, Lacoste, France. For a number of years she served as an Adjunct Associate Professor of Art History at the University of Toledo, Ohio, USA. She showed her work in international art exhibitions since the late 1960's (Belgrade, Berlin, Genoa, Hanoi, Kyoto, Ljubljana, London, Paris, Taipei and

**January and the next newsletter will be sent out at the end of March, the exhibitions included in this listing are for January through March 2012. Please submit exhibitions and other member news for April through June for our next newsletter.\*\***

\*\*\*

### **thINK: Boston Printmakers Members Show 2010**

**Red Section:** Jan. 26 - Feb. 23, 2012

[Worcester State University](#)

The Gallery, 486 Chandler Street . Worcester.

Reception: Thursday, Jan. 26, 2012, 5 - 7pm

**Blue Section:** March 10 - April 7, 2012

[University of New Orleans, St. Claude Gallery](#)

2429 St Claude Ave, New Orleans,

LA. Reception: Saturday, March 10, 2012, 6 - 9 pm

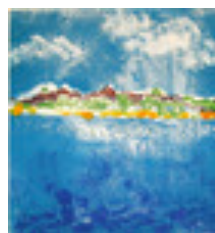
SGC Opening: Friday, March 16, 2012 (time TBA)

### **The exhibition [Printmaking: Prominent Printmakers](#)**

at the New Hampshire Institute of Art's French Building Gallery in Manchester, NH, features the work of several members of the Boston Printmakers: **Annie Bissett, Brian Cohen, Nancy Diessner, Anita Hunt, and Carolyn Webb**. Opening Reception: February 1, 2012, 5 - 6:30 pm

A talk about the artists in the show will be given by **Liz Chalfin** at 6:30 on February 1: [more >>](#)

**Joan Appel** will have a solo show at the James Memorial Library, Norwell, MA, April 6 - May 2; she will be participating in the following exhibits: Duxbury Art Assoc. winter show at the Art



Complex Museum, Duxbury, MA, Feb 5 - April 30; Cape Cod Art Assoc., Barnstable, MA, in the following shows:

"The Beauty of White," Jan 19 - Feb 20, "Breath of Spring,"

Feb 23 - Mar 19, "Off The Wall," CCAA Talbot Gallery, Mar 23 - Mar 26, and "The Places We Go," Mar 29 - Apr 16

**Martha Bradford/Alizarin Goldflake** "Deep Dark Depths," in Nordan Art, Second life (internet), Dec. 1, 2011 - Jan. 23, 2012; showed

Seoul among others) and her artwork has won many USA exhibition awards. Her work is in the collections of museums, galleries and private collections. [More on Carolyn Autry's life >>](#)



### **Walter Buttrick** 1948-2011

Walter Buttrick exhibited throughout New England and on the West coast. His work is in private collections in England, Germany, New Zealand and in the USA. Graduating from the Massachusetts College of Art in Boston with concentration in painting and printmaking, he further studied at the San Francisco Art Institute. Walter generated a volume of etchings, dry points, wood engravings and linoleum block prints, typically pushing the limits of each technique. He was a member of the Society of American Graphic Artists, the Boston Printmakers, the Albany Print Club and the Center for Contemporary Printmaking in Norwalk, Connecticut. His work is represented by [The Old Print Shop](#) in New York City.

## **Volunteer Opportunities**

### **Assistant Treasurer - [Contact Ky Ober](#)**

The Boston Printmakers needs someone to assist the treasurer with the organization's bookkeeping. Duties would include working with the treasurer to prepare monthly financial reports, preparing for the annual audit, receipt and payment processing. Knowledge of Quickbooks (or a willingness to learn) is essential. It is hoped that the assistant treasurer would take over for the treasurer when she steps down as Treasurer. This is a 2-year commitment.

### **Newsletter assistants - [Contact Nancy Diessner](#)**

The Boston Printmakers new e-newsletter is looking for members to write or assemble article content. Currently we need help on articles for the following sections: TECHNIQUES UP CLOSE; INTERVIEWS; RECOMMENDED EXHIBITIONS; and PRINT

artwork *Nasturtium* (shown right) in "Salon Show," Clark Gallery, Lincoln, MA, Nov. 28 - Dec. 31, 2011; "Breaking the Silence (2LEI in Second Life)," part of "la Giornata Internazionale contro la violenza sulle Donne," sponsored by Amnesty International, Sezione Italiana, curated by Shellina Winkler; The Knot Gallery, Second Life (internet), Nov. 2

5, 2011-Jan. 1, 2012; "Acquarella: After the Apocalypse," a permanent virtual art installation Acquarella: After the Apocalypse sim, virtual land owned by Jeri Rahja, virtual art patron, InWorldz (internet) permanent ongoing virtual art installation; "Designing Worlds" on Treet.tv (internet television station), Saffia Widdershins and Elrik Merlin, interviewers; Location: episode 120: <http://treet.tv/shows/designingworlds> (My segment starts at the 31minute mark.) Date of recording: March 21, 2011



**Cathie Crawford** is included in the following exhibitions during 2012: "[Shy Rabbit's Print International 3](#)"; on line exhibition, Shy Rabbit Contemporary Arts; "The 9th National Print Exhibition," The Turner Print Museum, California State University, Chico, CA; The Human Experience 2012 National Print Exhibition, Pacific Lutheran University, Tacoma, WA; "[Delta National Small Prints Exhibition](#)," Arkansas State University, Jonesboro, AR; "THINK: Boston Printmakers Members Show," Worcester State University, Worcester, MA

**Nancy Diessner** is showing in "[Alt Photo](#)" at Bromfield Gallery, 450 Harrison Ave., Feb. 3 - 25, Reception Feb. 3, 6 - 8:30pm

**Victor Gomez** was invited for the second time to participate in the Artists Residence Program of the [Guanlan Printmaking Workshop](#), Guanlan, Shenshen, China, for the entire month of April 2012; he was also invited to participate in the Douro International Print Biennial in Alijo,

STUDIO SPOTLIGHTS. For more information, please email Nancy Diessner @ [nwdiessner@gmail.com](mailto:nwdiessner@gmail.com)

**Website assistant** – [Contact Christiane Corcelle](#)

We are redesigning the website and we are looking for someone who can help. We have a new template and now we need to fill out all the pages with text and images. We are looking for someone who knows Dreamweaver and a bit of HTML. For more information please contact Christiane Corcelle @ [ccorcelle@mail.com](mailto:ccorcelle@mail.com)

## Exhibition Opportunities

[11th Lessedra World Art Print Annual - Mini Print 2012](#) Entries accepted

from Jan. 1 - March 31

[read more; information for participation](#)

[Arc Studios and Gallery](#), "Consequences"

**National Juried Exhibition.** Sculpture, painting, drawing, photo, printmaking, ceramics, assemblage, collage, mixed media, fiber art, artist book. May 12 - June 2, 2012. Juror: Donna Seager of Seager Gray Gallery, Mill Valley, CA.

Entry Deadline: February 24, 2012

[read more; get application; download prospectus](#)

[The New York Society of Etchers](#), "2nd National Exhibition of Intaglio Prints," The National Arts Club.

April 22 - 27, 2012. Juried by Mr. David Kiehl, Curator of Prints at the Whitney Museum of Art, New York.

Entry Deadline - February 28, 2012 [download prospectus](#)

[Diablo Valley College National Juried Exhibition of Prints](#), "Inked Surfaces."

Original works in all traditional printmaking media. Aug. 27 - Sept. 28, 2012. Juror: Archana Horsting, Executive Director of Kala Art Institute, Berkeley, CA

Entry Deadline: April 1, 2012

[read more and for prospectus and printable PDF](#)

[Paper Circle](#), a non-profit paper and book arts center in southeast Ohio. Juried exhibition "In, On, Of Paper." May 25 - Aug. 1, 2012. Juror, Eileen Wallace.

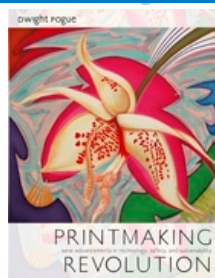
Entry Deadline: April 6, 2012

[read more details or enter online](#)

Portugal 2012 ([video of earlier biennial](#)); and he will participate in the "[27 Annual International Exhibition.](#)" University of Texas at Tyler, the exhibition will open Jan. 17, 2012.

**Anita Hunt** has new work included in the 2012 "[Delta National Small Prints Exhibition](#)" selected by Roberta Waddell, Jan. 19 - Feb. 17, [Arkansas State University](#), Jonesboro; and is also showing in the "[8th British International Mini Print Exhibit](#)," which travels throughout the UK, 2012 - 2014; she is also participating in the [Inkteraction Community Portfolio](#), an exchange and traveling show of 100 prints by members of the online printmaking community.

[Printmaking Revolution](#), by **Dwight Pogue**, is



a studio textbook written specifically for college and university print to fully embrace the latest, sustainable, petroleum-free and biodegradable materials that comply

with EPA and OSHA requirements without sacrificing the most subtle qualities of fine art prints. Several noted master printers have generously contributed their personal techniques. Numerous photographs accompany easy-to-follow steps for safely combining digital technology with traditional printmaking, introducing new and exciting advancements for students and professionals alike.

**Ron Mier** had been recently awarded a residency at the [Vermont Studio Center](#) in Johnson, VT, where he will be a resident printmaker for the month of June. Ron will be concentrating on a new series of large format work using alternative printmaking techniques and equipment. Ron has moved to his ancestral home in the small village of Tierra Amarilla, NM, where he has opened his new studio to the public and is teaching printmaking workshops to students. He hopes to soon have his gallery open as well.

**Peri Schwartz** is having solo shows at the following: Nashville, TN, Feb 4 - Mar 1; [Page Bond Gallery](#), Richmond, VA, March 2 -

[Center for Contemporary Printmaking](#), Norwalk, CT, 3rd Biennial "FOOTPRINT" International Competition 2012. Exhibition June 10 – Sep. 2, 2012. Juror Donald Sultan, artist.

Entry Deadline: April 21, 2012

[read more; get prospectus](#)

## Friend us on [Facebook](#); Find us on [Twitter](#)

**FACEBOOK:** <https://www.facebook.com/pages/The-Boston-Printmakers/228758027149943?sk=wall>

**TWITTER:**  
<http://twitter.com/BostnPrintmaker>

31; [Gallery NAGA](#), Boston, MA, March 30 - April 28



**Liz Shepherd's** solo show at [Boston Sculptors Gallery](#), 486 Harrison Ave., runs from Feb. 8 - March 12. Reception: Feb., 11, 1 - 4pm, with Artist's talk at 2pm; First Friday, March 2, 5 - 8pm

**Eleanor Rubin's** artwork is featured in the [winter 2011-2012 issue](#) of the online magazine of literature and art [Persimmon Tree](#). The article celebrates a book about her artwork published in 2011 (Charta, Milan) *Eleanor Rubin: Dreams of Repair*. (artwork *Memory Blue* 2003 woodcut on handmade paper, 23" x 30")



• The Art Institute of Boston, Lesley University • 700 Beacon Street, Boston, Massachusetts 02115 US

---

If you no longer wish to receive these emails, please reply to this message with "Unsubscribe" in the subject line or simply click on the following link: [Unsubscribe](#)

---

The Boston Printmakers  
The Art Institute of Boston, Lesley University  
700 Beacon Street  
Boston, Massachusetts 02115  
US

[Read](#) the VerticalResponse marketing policy.

